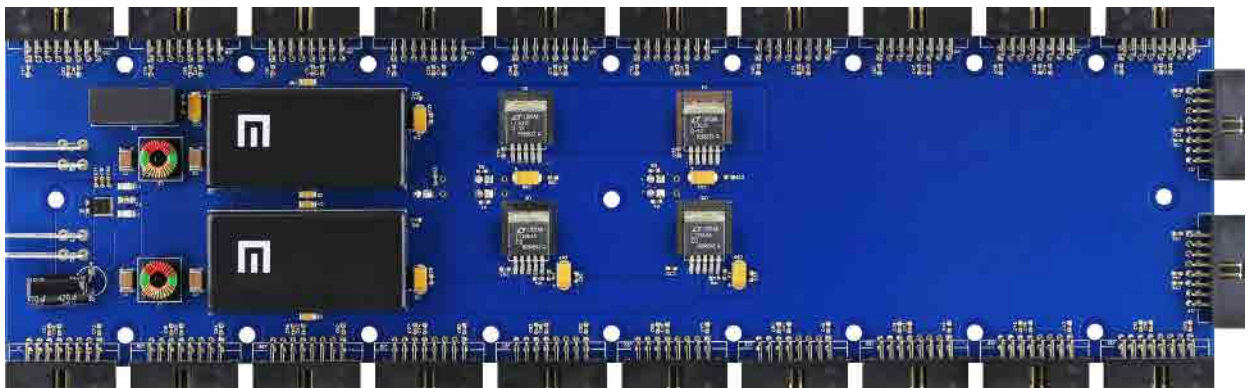
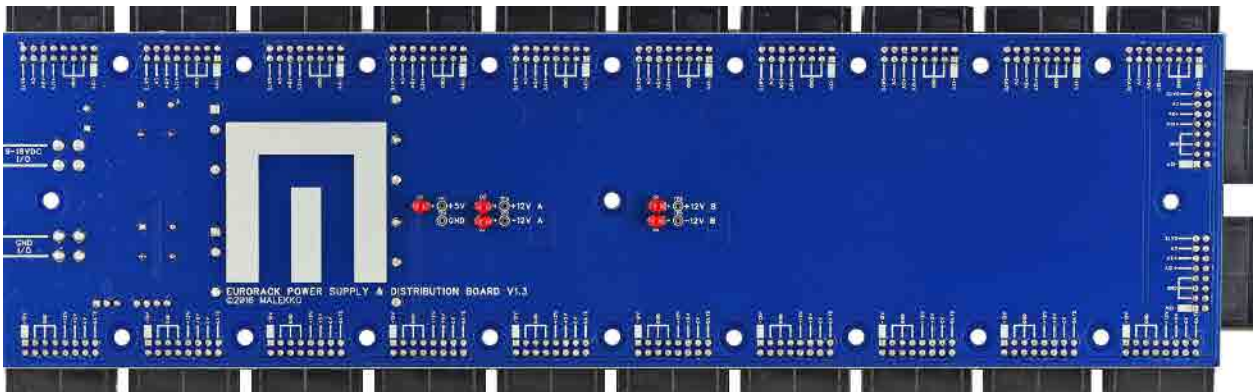


**MALEKKO**

# MALEKKO POWER MANUAL V.1.3.1





## TABLE OF CONTENTS

SPECIFICATIONS	1
+/-12V POWER SECTIONS	2
ENCLOSURE MOUNTING	3
WIRING DIAGRAM	4
WARRANTY	5



## SPECIFICATIONS

FORMAT:  
EURORACK

BOARD DIMENSIONS:  
310MM x 84.99MM

POWER SPECS:  
+12V output at 2.2Amps  
-12V output at 2.2Amps  
+5V output at 1Amp

DC POWER BRICK SPECIFICATIONS:  
9-18VDC, 6Amps, 2.5mm Barrel Connector (Center Positive)

RECOMMENDED DC POWER BRICK:  
CINCON ELECTRONICS, TRH100A12  
12VDC, 8.34Amps, 2.5mm Barrel Connector (Center Positive)  
<https://www.mouser.com/ProductDetail/cincon/trh100a120-12e12-level-vi/?qs=P8zB4ONU6fwxCPUB3Sn3aQ%3D%3D&countrycode=US&currencycode=USD>

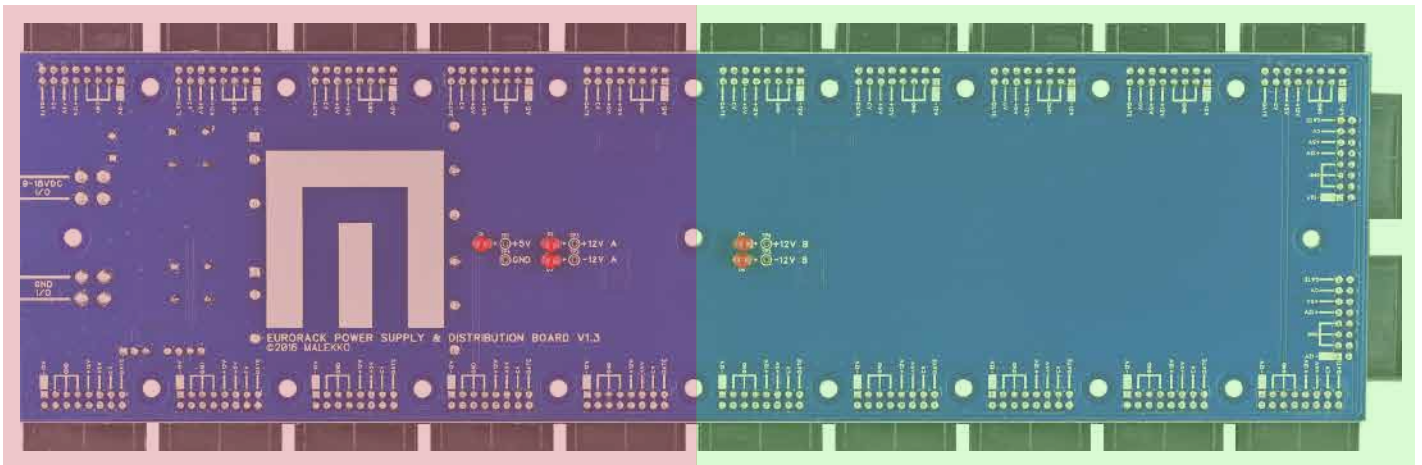
OR:

<https://www.mouser.com/ProductDetail/Cincon/TRH100A120-02E12-Level-VI?qs=sGAEpiMZZMs1jjUfAXmXyrFWf%2FJhuYWUG0OEzobEXjcf%252B7eoe1o8g%3D%3D>



## +/-12V ISOLATED OUTPUT SECTIONS

Malekko power uses 2 pairs of linear regulators for +/-12V power outputs. Each pair of regulators feeds a section of EuroRack power headers as shown below. Current is 1.1A per section. Since these sections are isolated from each other, noisier modules may be connected to a specific power section to minimize the bleed of noise into the whole system's power rails.



**SECTION 1: 10 POWER HEADERS**

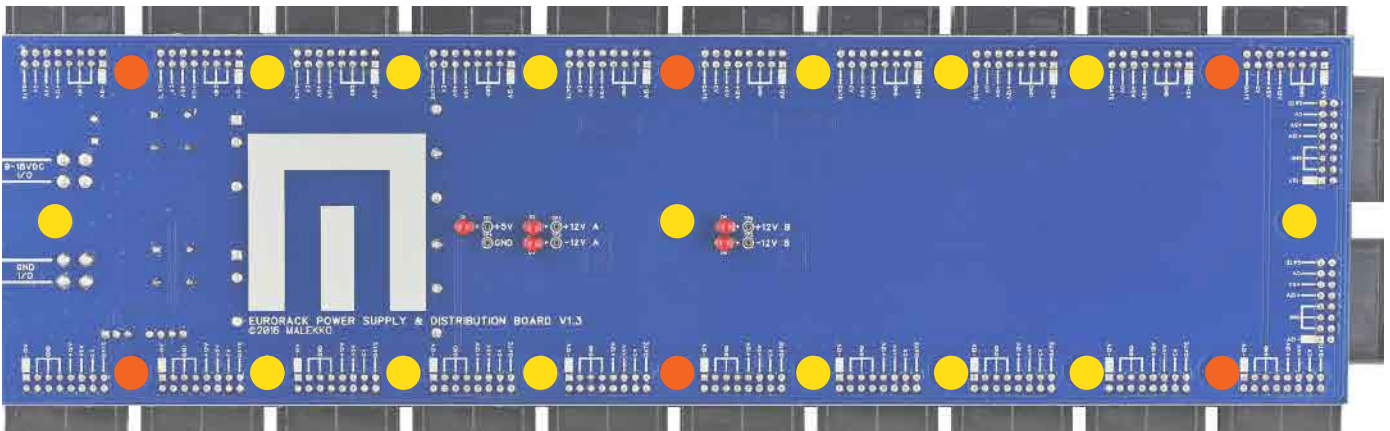
**SECTION 2: 12 POWER HEADERS**



## ENCLOSURE MOUNTING

Malekko Power must be attached to your EuroRack case using #6-32 mounting screws and 1/2 inch insulated spacers. The top side (with the big Malekko logo) should be mounted facing upwards as shown. There are 21 mounting holes on the PCB, but only the 6 highlighted ones are necessary for mechanical stability.

Mount with top side facing up.



- Recommended #6-32 screw mounting hole configuration.
- Optional #6-32 screw mounting holes.

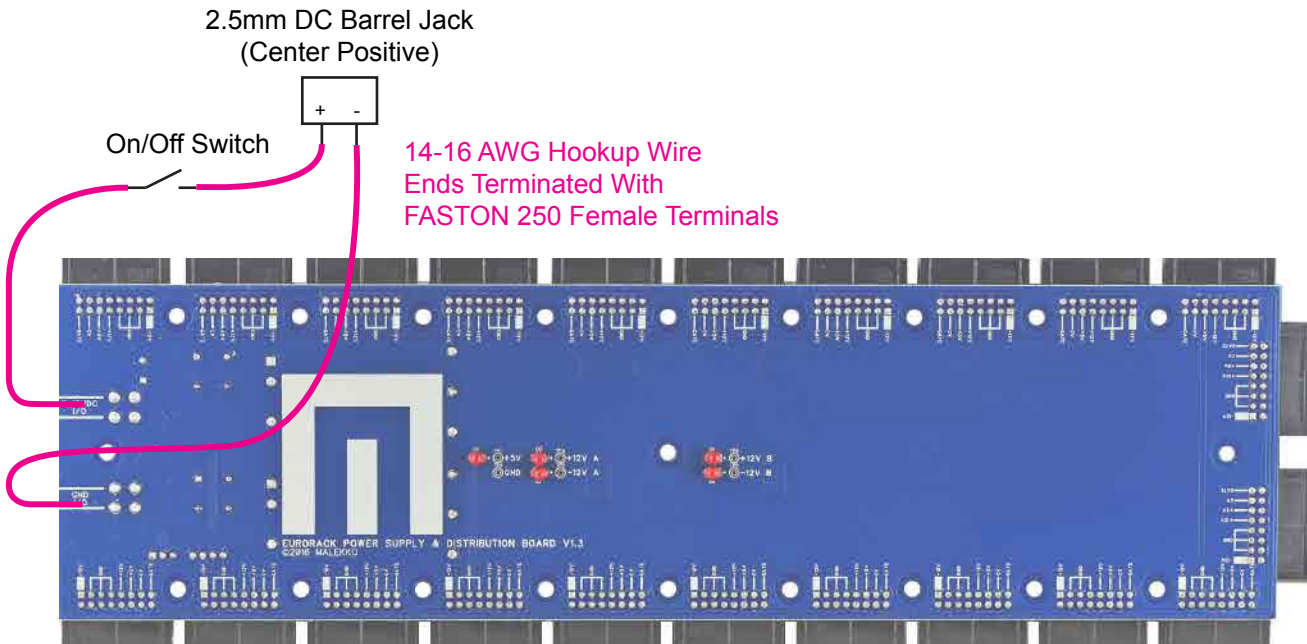
### Suggested Supplies for Enclosure Mounting

- (6) #6-32 Insulated Spacers (min. 1/2 inch height)
- (6) #6-32 Machine Screws (1 inch length, variable depending on mounting location width)
- (6) #6-32 Metal Washers & Hex Nuts OR T-Nuts



## WIRING DIAGRAM

After mounting in your case, Malekko Power must be wired to your case's on/off switch and a 2.5mm DC Barrel Jack as shown below. The hookup wire ends which attach the power board should be terminated with FASTON 250 Female Terminals for quick connection to the FASTON connectors underneath the PCB.



### Suggested Supplies for Wiring

(2) FastOn 250 Female Crimp Terminals

<http://www.mouser.com/ProductDetail/TE-Connectivity-AMP/640905-1/?qs=sGAEpiMZZMt7ScBeCnc0e0jjCjg77r4a>

(1) 2.5mm DC Barrel Jack

(1) SPST On/Off or SPDT On/On Power Switch

A few feet of 14-16AWG Hookup Wire



## WARRANTY

This product is covered by the Malekko Heavy Industry warranty, for one year following the date of purchase. This warranty covers any defect in the manufacturing of this product. This warranty does not cover any damage or malfunction caused by incorrect use – such as, but not limited to, power cables connected backwards, excessive voltage levels, or exposure to extreme temperature or moisture levels. The warranty covers replacement or repair, as decided by Malekko Heavy Industry. Please visit our website **[malekkoheavyindustry.com](http://malekkoheavyindustry.com)** to obtain full warranty information and to register your product for coverage.